



MC04-7010

Transceiver Insertion/ Extraction Tool

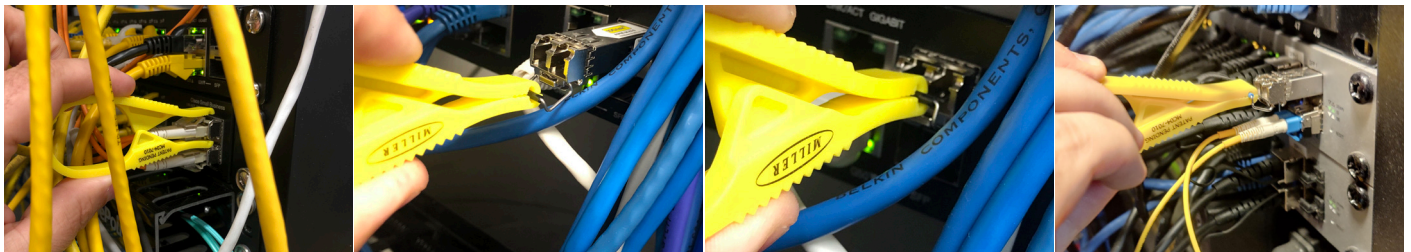
Specially designed for SFP Hot Pluggable network transceivers



Features

- Patent pending tip securely attaches to handle on flip handle style transceivers
- Tip geometry and narrow tool design allows for easy removal and installation, ideal for hot swapping
- Narrow profile designed to work in high density panel installations
- Ergonomic grip for easy and secure operation
- One piece polymer with integrated spring design

Part #	Item description	Cable compatibility	Dimensions	Weight
MC04-7010	Transceiver Insertion/ Extraction Tool	SFP/SFP+, QSFP/QSFP+, All Transceivers with Flip Handle	1.5" x 3.75" x 0.4" (38.1 x 95.3 x 10.2 mm)	0.02lb (9g)



Engage the tool with the transceiver latch

Pull tool back to rotate latch downwards

Pinch tool closed to grip onto latch

With grip secured onto the latch, transceiver can now be pulled out of housing

For more information or to locate your nearest authorized Ripley® distributor, visit www.ripley-tools.com or call **1 (800) 528-8665** to speak with a customer service representative.



A proud member of the Hubbell family.