

# DLS 650

## Dual LED Source

850nm and 1300nm Wavelengths

The DLS 650 optical LED source provides multiple wavelength options to meet modern fiber optic testing needs. The base model outputs 850 and 1300nm wavelengths in either single or dual mode.

When combined with the RP 560 model optical power meter, this LED source can greatly reduce the time needed to test fiber cables with its automated wavelength switching feature. The unit periodically switches between available wavelengths, and the power meter recognizes each time the switch occurs, allowing multiple loss tests to be completed simultaneously.

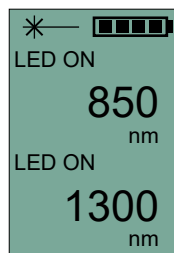
Easy removal of the included SC adapter allows the light source ferrule to be cleaned, preventing contamination of test jumpers. Additional adapters are available.

This device maintains full compliance with all FDA and CFR standards for light-emitting products.



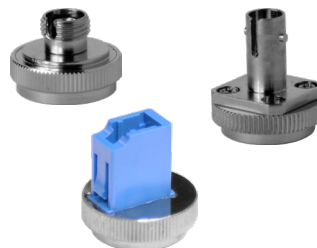
## Features

- Small form-factor for fast, simple testing in the field
- Single output port ensures faster switching when testing at multiple wavelengths
- NIST-traceable LED output
- 2kHz, 1kHz, and 270Hz tone modulation
- Long-lasting AA batteries



Combine DLS 655 with the RP 560 optical power meter to perform fiber testing with automated switching.

Simultaneous dual-wavelength transmission cuts testing time in half.



Quick-change adapters allow users to adjust the DLS 650 output to match their testing situation. See next page for full list of adapters.



Hard-sided, padded carrying case included.

# Specifications

DUAL MULTIMODE LED SOURCE	
Wavelength	850nm & 1300nm (single or dual modes)
Output Power	-22.00 dBm
Output Stability	±0.05dB (1 Hour) ±0.03dB Long-Term (15 min warm-up)
Spectral Width	40nm / 120nm
Optical Interface	SC/FC/ST/LC Interchangeable
Tone Output	2 kHz, 1kHz, 270Hz
Laser Class	Class 1 (FDA 21 CFR 1040.11)
Power	Push Button Toggle
Battery	AA - 2 Alkaline Batteries Included
Operating Temperature	-10° to +50° C
Storage Temperature	-30° to +60° C
Dimensions	5.8cm x 21.5cm x 3.0cm
Weight	6 oz

## Ordering Information - Accessories

### Light Source Adapters

PART NO.	DESCRIPTION
AC 022B	SC Adapter
AC 023B	FC Adapter
AC 024B	ST Adapter
AC 025B	LC Adapter

### Patch Cord Accessories

PART NO.	DESCRIPTION
AC 550	MM SC-LC - 1m Simplex
AC 551	MM SC-SC - 1m Simplex
AC 552	MM LC-LC - 1m Simplex
AC 600	SC-SC Simplex Bulkhead Adapter
AC 601	LC-LC Simplex Bulkhead Adapter
AC 602	LC-LC Duplex Bulkhead Adapter

### Cleaning Tools

PART NO.	DESCRIPTION
AC 089	One-Click Cleaner for 1.25mm & ODC Ferrules / Bulkheads
AC 099	One-Click Cleaner for 2.5mm Ferrules / Bulkheads
AC 090	1.25mm Swabs (100 per Pack)
AC 091	2.5mm Swabs (100 per Pack)
AC 092	SqR Pad & Fiber Wash Pen
AC 190	Cletox Cleaner - Type B - Blue Tape

M-DS031-05 DLS 650

Ripley ODM® brand test equipment is furnished with a 2 year warranty extending from the original date of purchase. Contact Ripley Tools for information on recalibration and repair of test equipment. Ripley makes every effort to ensure that all information in this data sheet is accurate. Ripley Tools assumes no responsibility for any errors or omissions and reserves the right to modify this document at any time without notice. Please contact Ripley ODM® brand specialists for pricing and availability of equipment.

