

# WS-MSES

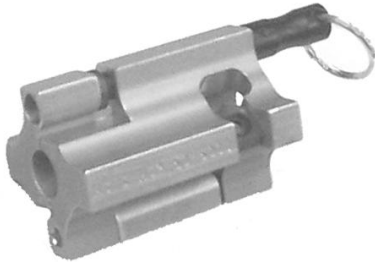
## Mid-Span and End Stripper

**Warning! This tool is not protected against electrical shock!** Always use OSHA/ANSI or other industry approved eye protection when using tools. This tool is not to be used for purposes other than intended. Read carefully and understand instructions before using this tool.

The WS-MSES is designed to end strip and mid span strip insulated tap wire.

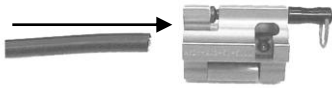
Available for the following conductor sizes:

Model No.	Part No.	Replacement Blade
WS-MSES #2 110 Mil	37388	CB 223
WS-MSES #4 110 Mil	37380	CB 223
WS-MSES #6 Solid 110 Mil	37384	CB 223
WS-MSES #4 150 Mil	37715	CB 223
WS-MSES #2 150 Mil	37730	CB 256
WS-MSES #6 150 Mil	37800	CB 256
WS-MSES #4 Solid 110 Mil	38060	CB 223



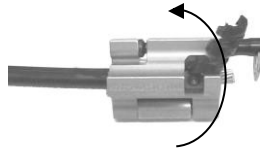
## OPERATING INSTRUCTIONS

### END STRIPPING



**Fig. 1**

**Step 1.** Slide the cable into the tool until the tool blade meets the cable outer covering.



**Fig. 2**

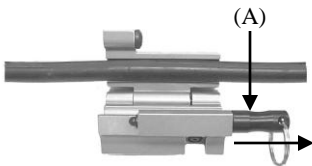
**Step 2.** With the cable in place, turn the tool in a clockwise direction and begin stripping process.



**Fig. 3**

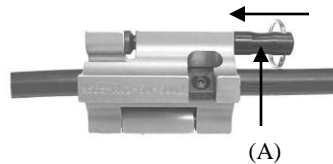
**Step 3.** To stop the stripping operation, hold the cable tight with a gloved hand while turning the tool against the gloved hand or thumb.

### MID SPAN STRIPPING



**Fig. 4**

**Step 4.** Open the tool by pulling the locking lever (A). Place the cable in the tool channel as in Fig. 4, and close the tool until the locking lever (A) engages into a locked position as in Fig. 5.



**Fig. 5**



**Fig. 6**

**Step 5.** With the cable in place, turn the tool in a clockwise direction and begin stripping process.

**To stop stripping process follow step 3.**

Warranty: RIPLEY warrants its products against defective materials and workmanship for a period of one year from date of shipment from the RIPLEY factory provided the product is utilized in accordance with instructions and specified ratings.



46 Nooks Hill Road  
Cromwell, CT 06416  
Phone: 800-528-8665  
Int'l: (01) 860-635-2200  
Fax: (01) 860-635-3631  
e-mail: info@ripley-tools.com  
Internet: www.ripley-tools.com



37377 rev.2  
12-01-12 ff