



SENKO INSERTION / EXTRACTION TOOL

p/n MC04-7000

Senko p/n RMT-203



Patent Pending

WARNING! THIS TOOL SHOULD NOT BE USED ON LIVE ELECTRICAL CIRCUITS. IT IS NOT PROTECTED AGAINST ELECTRICAL SHOCK!

Always use OSHA/ANSI/CE or other industry approved eye protection when using tools. This tool is not to be used for purposes other than intended. Read carefully and understand instructions before using this tool.

WARRANTY: RIPLEY warrants its products against defective materials and workmanship for a period of two years from date of shipment from the RIPLEY factory provided the product is utilized in accordance with instructions and specified ratings.

Product Overview

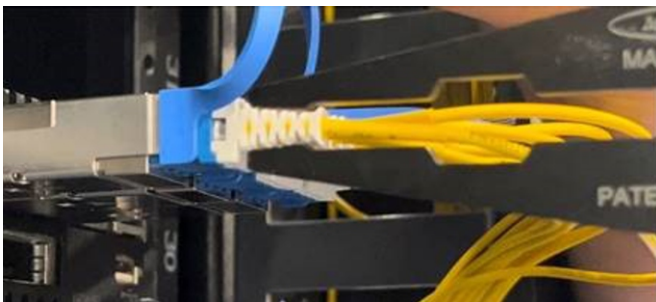
The **MILLER**® MC04-7000 tool is an insertion/extraction tool for Senko® CS® and SN® connectorized cables in a high density enterprise or data center application. The jaws are specially sized and formed to securely install or remove connections to transceivers with no interference to adjacent connectors.

Product Features

- Narrow tool form for high density transceiver interface
- Keyed tip of tool will reliably grasp the connectors
- Built in jaw relief for connector boot clearance
- Angled handles for ease of use.

Operating Instructions

1. Unlatch the tool so it fully opens.
2. Gently squeeze the back of the CS® or SN® connector with the MC04 jaws.
3. Insert or extract the cable assembly from the port as desired. The connector will audibly click when correctly inserted.



Ripley Tools LLC

46 Nooks Hill Road, Cromwell, CT 06416

Phone: +1 (800) 528-8665 · Fax: +1 (860)635-3631 · Email: csr@ripley-tools.com · www.ripley-tools.com

MC04